



## CONTEMPORARY PULL

# ROUND TWO

THE SECOND ITERATION OF SQUARE ONE. AN ELEGANT GEOMETRIC DESIGN. **INFINITE. FRESH. GLOBAL.**



RD01



RD02



RD03



RD04



RD05



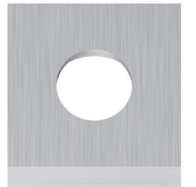
RD06



SQ07



SQ08



RD07



RDTOW



EC06



EC07

# ROUND TWO

## CABINET



**RD01**  
2.313" x 2.313"



**RD02**  
1.25" x 6"



**RD03**  
1.25" x 6"



**RD04**  
1.25" x 6"



**RD05**  
1.25" x 4"



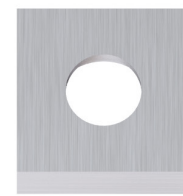
**RD06**  
1.25" x 4"



**SQ07**  
1.25" x 4"



**SQ08**  
1.25" x 6"



**RD07**  
2" x 2"

## DRAWER

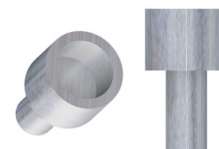


**EC06**  
4" x 1.25"



**EC07**  
6" x 1.25"

## TOWEL HOLDER



**RDTOW**

## COLORS



**NATURAL**



**EBONY**



**BRONZE**



**BORDEAUX**



**PEACOCK**



**CANARY**

*This hardware is meant to be installed flush with .75"(inch) thick cabinet material by qualified tradespeople. Contemporary Pull recommends you partner with a qualified installer in your area. In order to maintain the integrity of the design intent please contact our office so that we can assist you with your inquiry.*

*Contemporary Pull accepts no responsibility for any problems encountered during a self-installation. This disclaimer is subject to change at any time. Please contact us to make sure you have our most current version.*

V1/2019